

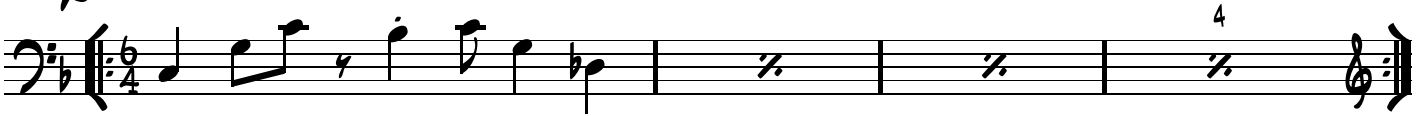
TEKUFAH

UT

♩ = 100

JOHN ZORN
RELEVÉ : D. PAUTRIC

INTRO



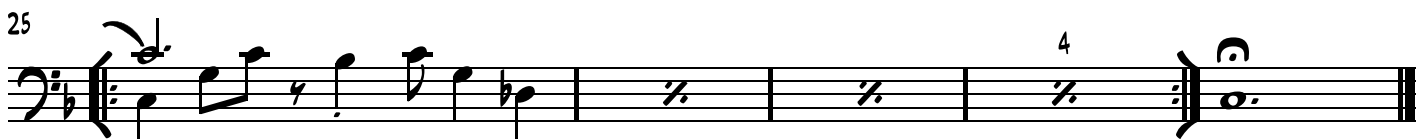
THÈME x3 OU +



To CODA



CODA



TEKUFAH

B \flat

$\text{♩} = 100$

JOHN ZORN
RELEVÉ : D. PAUTRIC

♩ INTRO

Musical notation for the Intro section, measures 1-4, in bass clef, 6/4 time signature. The melody starts with a half note G2, followed by quarter notes A2, B2, and C3. Measure 2 has a repeat sign. Measure 3 has a repeat sign. Measure 4 has a repeat sign and a fermata over the final note.

5 **THEME X3 OU +**

Musical notation for the Theme section, measures 5-7, in treble clef, 6/4 time signature. The melody starts with a half note G4, followed by quarter notes A4, B4, and C5. Measure 6 has a repeat sign. Measure 7 has a repeat sign.

8

Musical notation for the Theme section, measures 8-10, in treble clef, 6/4 time signature. The melody continues with quarter notes D5, E5, F5, and G5. Measure 9 has a repeat sign. Measure 10 has a repeat sign.

11 **To CODA** ⊕

Musical notation for the Theme section, measures 11-13, in treble clef, 6/4 time signature. The melody continues with quarter notes A5, B5, and C6. Measure 12 has a repeat sign. Measure 13 has a repeat sign.

13 **IMPRO ?**

Musical notation for the Improvisation section, measures 13-20, in bass clef, 6/4 time signature. The melody starts with a half note G2, followed by quarter notes A2, B2, and C3. Measure 14 has a repeat sign. Measure 15 has a repeat sign. Measure 16 has a repeat sign. Measure 17 has a repeat sign. Measure 18 has a repeat sign. Measure 19 has a repeat sign. Measure 20 has a repeat sign and a fermata over the final note.

21 **SOLO OPEN**

Musical notation for the Solo Open section, measures 21-24, in bass clef, 6/4 time signature. The melody starts with a half note G2, followed by quarter notes A2, B2, and C3. Measure 22 has a repeat sign. Measure 23 has a repeat sign. Measure 24 has a repeat sign and a fermata over the final note.

⊕ CODA

25

Musical notation for the Coda section, measures 25-26, in bass clef, 6/4 time signature. The melody starts with a half note G2, followed by quarter notes A2, B2, and C3. Measure 25 has a repeat sign. Measure 26 has a repeat sign and a fermata over the final note.

TEKUFAH

E \flat

$\text{♩} = 100$

JOHN ZORN
RELEVÉ : D. PAUTRIC

INTRO

5

THÈME X3 OU +

8

11

To CODA \oplus

13

IMPRO ?

21

SOLO OPEN

25

\oplus **CODA**

25

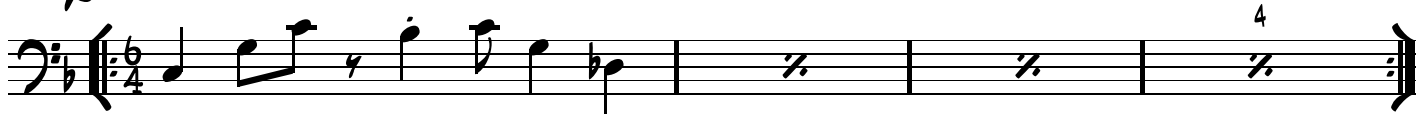
TEKUFAH

UT

♩ = 100

JOHN ZORN
RELEVÉ : D. PAUTRIC

♩ INTRO



5 THÈME X3 OU +



⊕ CODA

